



1on1

Make-up Coaching

We are delighted to now offer 1on1 Make-up Coaching sessions to give you to experience learning from an expert.

You will be taking away an in-depth custom skin care routine, multiple make-up products knowledge, skilled techniques and finishing applications that will help you mastering your own make-up achieving flawless and effortless results.

You will practice recreating the full steps demonstrated on one side of your face/model coached under the expert guidance.

Professionals seeking to refine their craft with highly expert coaching are welcome to enquire with proof of their work in order to assess the session.



Session Overview

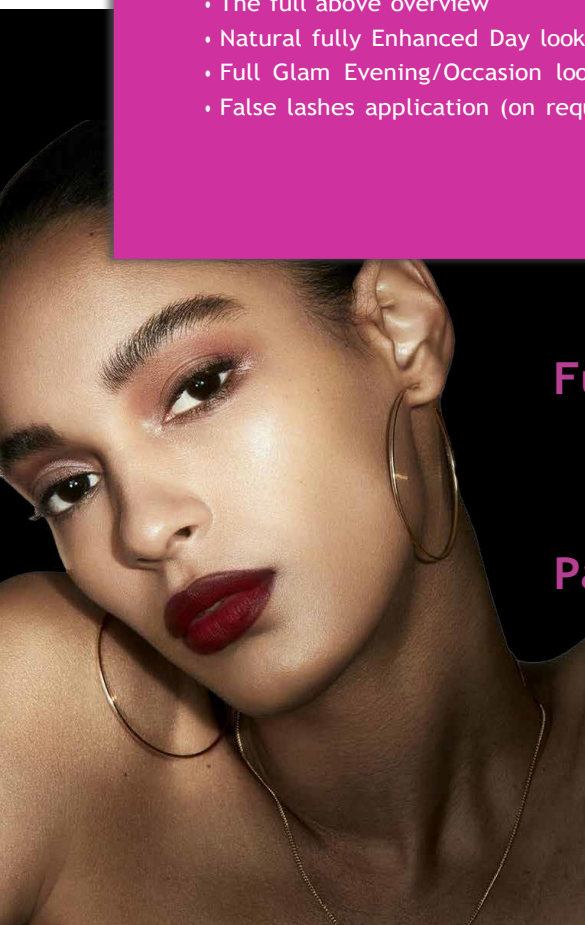
- Skin type understanding
- Skin preparation
- Pre-Make-up Skin Care
- Skin Undertone understanding
- Skin Matching Foundation understanding
- Foundation techniques
- Colour correcting understanding
- Concealer techniques
- Brows techniques
- Face Contouring techniques
- Eye blending techniques
- Face blending techniques
- Lips techniques
- Enhanced Healthy looking customized Natural Make-up look
- Q&A's throughout the session

Full Session (3 hours)

- The full above overview
- Natural fully Enhanced Day look
- Full Glam Evening/Occasion look
- False lashes application (on request)

Part Session (2 hours)

- The full above overview
- Natural fully Enhanced Day look



Full Session (3 hours)

£ 350
[£75 Booking fee included]
VAT All incl

Part Session (2 hours)

£ 250
[£50 booking fee included]
VAT All incl

Weekend appointments only

For availability please email us at glauca@glaucarossi.com
or call +44 (0)207 289 7485 Monday-Friday

Our Alumni Portfolio



**We are located in Maida Vale,
the Heart of West London**

10, Sutherland Avenue W9 2HQ London
Nearest tube stations
Warwick Avenue (Bakerloo Line)
Royal Oak (Hammersmith and City Line)

